

**NEW**

**ESCORT**  
**iLOG**

*THE INTELLIGENT LOGGER FAMILY*



- **DECISION MAKING AT A GLANCE**
- **CONVENIENT QUICK DOWNLOAD**
- **0.1° RESOLUTION PROVIDING AN INFORMATION ADVANTAGE**
- **INTUITIVE SOFTWARE FOR EASE OF USE**



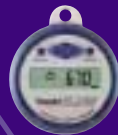
ESCORT iLog  
Temperature Logger



ESCORT iLog  
Temperature Logger  
with external sensor



ESCORT iLog  
Temperature Logger  
with 2 external  
sensors



ESCORT iLog  
Humidity Logger

**ESCORT**  
DATA LOGGING SYSTEMS

## Decision making at a glance

iLog analyses the data for you and its multifunctional display presents you all relevant information on the spot without PC download. Your decision to accept or reject goods can be made right away, saving you time and effort.

## Convenient Quick Download

With its new electronic technology iLog communicates quickly, providing you with the convenience of high download and programming speeds. So when it comes to documentation and traceability obligations iLog helps you to get more done.

## 0.1°C Resolution Providing an Information Advantage

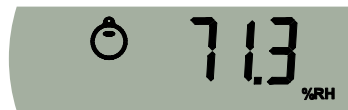
Due to its combination of great resolution and high accuracy, the iLog can detect and record the smallest fluctuations in temperature for the tight monitoring of critical conditions. You benefit from the confidence and security of having precise relevant information at your fingertips.

## iLog family of intelligent loggers

iLog intelligent loggers provide you with the technological facilities to introduce total quality control for temperature and humidity sensitive products and services while supporting your compliance with the stringent monitoring requirements of today's markets. With the extended functionality of its display the iLog supplies you instantly with all the information required.

## Special Features

- **Bookmark via Magnet Swipe:** Mark readings you wish to identify by swiping a magnet over the iLog label. As this action can be performed only using a start magnet JA-KEY, this convenient feature may be used to register when the iLog has been inspected by an authorised party.



Current reading of humidity sensor



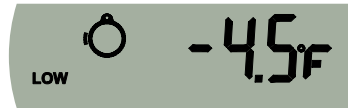
Highest reading of humidity sensor after logging has ended, upper alarm specification was exceeded, battery is low.



Logger armed for timer start, (internal temperature and humidity sensor activated)



Average reading of internal sensor (in degrees celsius)



Lowest reading of left external sensor (in degrees fahrenheit).



Time the right external sensor spent under lower alarm specification at end of logging cycle

- **LCD Functionality:** You can see comprehensive information on status of logging cycles, statistics, and alarm conditions on iLog's multifunctional display. Console Software allows you to define the time iLog pauses on each display before scrolling to the next.
- **Available Sensor Combinations:** Choose the sensor combination required for your application:
  - Internal Sensor
  - Internal and External Sensor
  - Two External Sensor
  - Internal Temperature and Humidity Sensor
- High Temperature Option for External Sensor -20 to +100C (-4 to 212°F)
- Internal Sensor iLog immersion rated IP67
- User replaceable battery



ESCORT iLog Temperature Loggers

ESCORT iLog Humidity Logger

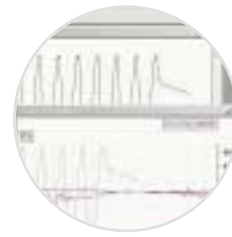


## Intuitive Software for Ease of Use

The simple step by step software leads you intuitively through logger configuration and information retrieval. The familiarity of the functions and structure of Console's Windows based graphical interface makes the software very easy to operate, even for new users.



Logger Overview



Multi-link



Step by step configuration process

## REDi and portal interface

You can instantly collect data from loggers located up to 4 metres away - no cables to connect and the logger simply stays put continuing its cycle without interruption. While each logger remains installed in its portal interface, the REDi reader collects the data and displays the relevant information, graph or list mode, while storing it for later download to your PC.



ESCORT REDi



ESCORT Portal

### ESCORT Console Software

Easy to use Windows based Console software for programming the logger and analysing downloaded data. The standard version is included with the PC Interface JA-INT-WIN. The extended version JA-SWP-CON has many enhanced features like Multi-Graphing and User-Administration.

### ESCORT Red-i Portable Reader & Programmer ESCORT Portal Multi Purpose Interface

Download logger data and upload new programmes to different loggers without touching your iLog. The logger resides in the battery powered Portal Interface facilitating infrared communication with REDi up to 4 meters away. REDi can take 1MB of logger data for later download to PC and is furthermore able to display downloaded data in graph or list mode for instant analysis.

### ESCORT Chartreader EJ-CR

Portable printer producing hardcopies for documentation on site: iLog simply slots into the attached interface for logger data download. If desired the logger may be re-armed for another logging cycle. Output versions are graph, list, and out of specification listing. ChartReaders are programmable using the ChartReader interface JA-CHR-INT-E for connection to PC, and the Console software. The memory version EJ-CR-MEM has 1MB memory to store multiple data sets for later transfer to PC.

### ESCORT Alarm Link JA-ALK

Interfacing device connecting to any instrument (e.g. siren, mobile phone) that will perform its function when triggered by alarm condition: Place your iLog in the alarm link interface and as soon as measurements outside the logger's specifications are recorded, the connected device is activated (e.g. audible alarm by siren, or text message sent by mobile phone).

### ESCORT PC Interface JA-INT-WIN

Convenient sit-on interface connecting to your PC via serial interface (COM port) including standard Console software. This interface and software can also be used for ESCORT Junior and Precision loggers.

### ESCORT Magnet Keyring JA-KEY

Start Magnet in form of keyring to be used for starting the logger, and for the bookmark feature.



### ESCORT iLOG - Temperature Loggers

Temperature Range	40°C to 70°C (-40 to 158°F), ext. sens. option -20to100°C
Sensors	Internal, Internal/External, 2 x External
Memory	32,000 readings (64 KB non-volatile memory)
Resolution	0.1°C (0.2°F)
Accuracy	+/- 0.3°C
LCD Display	Software programmable
LEDs	Active and Alarm
Data Recovery	Via standard ESCORT PC interface or ESCORT PORTAL II interface or ESCORT REDI Reader
Size	Diameter 76mm, height 36mm
IP Rating	Internal sensor IP67, others IP51
Warranty	3 years excluding battery
Power	User replaceable lithium battery
Case Material	Polycarbonate

### ESCORT iLOG - Humidity Logger (remaining specs as above)

Humidity Range	0 - 100%RH
Memory	16,000
Resolution	0.1%RH
Accuracy	+/-3%

### ESCORT CONSOLE - Software Features

- Available Languages: English, German, French, Spanish, Italian
- Recorded data viewable in graphs or tabular formatted reports
- Support of all models and versions of ESCORT Data Logging System's products

#### Additional Features for Extended Professional version:

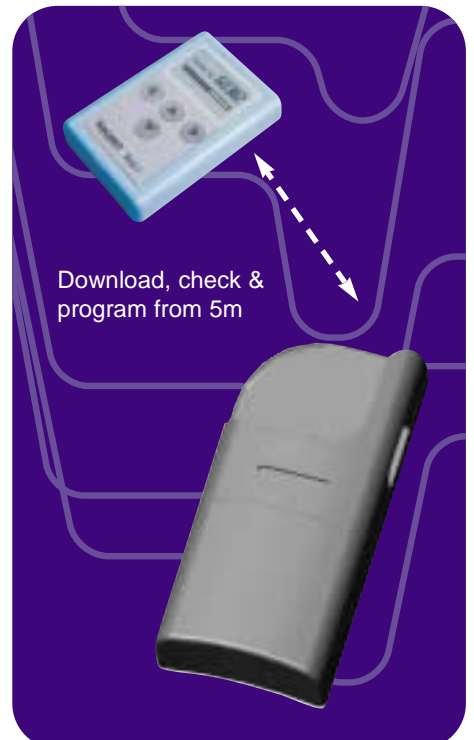
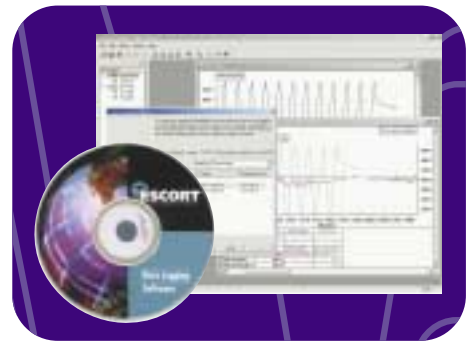
- Multi-Graph
- Multi-Link
- Industrial Formulae
- Virtual Sensors
- User Administration
- Compliance with CFR Title 21 Part 211

### ESCORT REDI - Reader

Transfer distance	4 meters
Non volatile Memory	Program 100 loggers plus 1 million readings of stored data
LCD Display	Displays logger serial number, data transfer progress, list or graph data
Size(HxWxD)	80 x 52 x 15 mm
Weight	50 grams with batteries
Case material	Polycarbonate
Warranty	12 months excluding batteries

### ESCORT PORTAL - Multi Purpose Interface

Dimensions(L x H x W)	177 x 45 x 85 mm
Weight	200 grams (excluding batteries)
Power	4 x "C" cell batteries
Communication	Infra Red



Escort Data Logging Systems reserve the right to alter the specifications without notice.

PO Box 15 639  
New Lynn  
Auckland  
New Zealand

Ph +64 9 826 0960  
Fax +64 9 826 0285  
sales@escortdls.com  
www.escortdls.com

**ESCORT**  
DATA LOGGING SYSTEMS